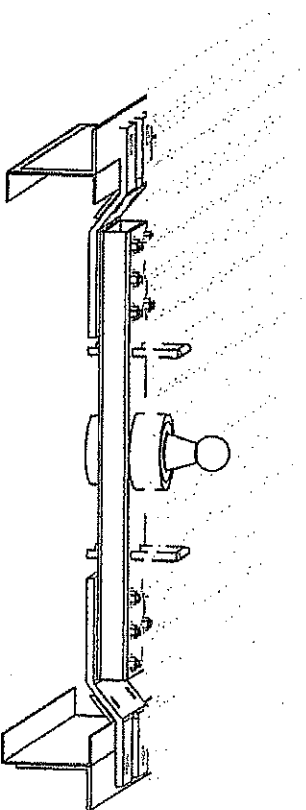


The Diamond Hitch

America's Premium Gooseneck Hitch

DH1303



The Diamond Hitch is rated to 30,000 lb. Gross Towing Weight and 7,500 lb. tongue weight

***** WARRANTY CAUTION *****

INSTALLATION MUST BE PERFORMED BY A QUALIFIED MECHANIC WITH TECHNICAL KNOWLEDGE OF BASIC MECHANICAL SKILLS

INSTALL & SAFETY GUIDE

• WARRANTY CAUTION •

INSTALLATION MUST BE PERFORMED BY A QUALIFIED MECHANIC WITH TECHNICAL KNOWLEDGE OF BASIC MECHANICAL SKILLS.

Blue Ox

One Mill Road, Industrial Park

Pendler, NE 69047

Phone 402-385-3051 Fax 402-385-3360

Online: <http://www.blueox.us>

<http://www.diamondhitchinc.com>

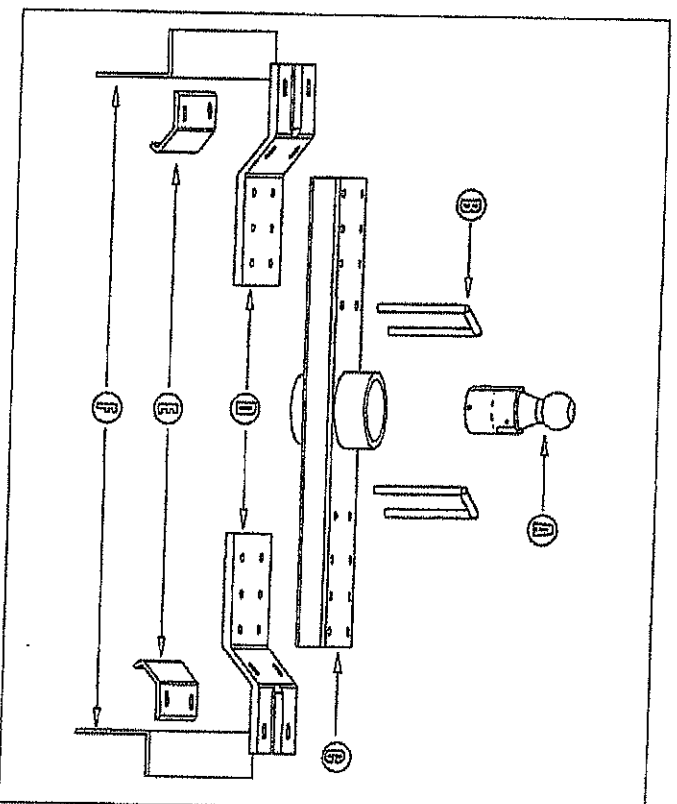
E-mail: sales@diamondhitchinc.com

SAFETY NOTES FOR THE DIAMOND HITCH

1. Read all instructions and safety precautions before proceeding with installations.
2. Do not use any open flame under the truck bed to cut or weld. There is extreme danger of explosion or fire.
3. Vehicle must be securely blocked and brakes set before working underneath.
4. Do not clamp hitch over any wiring or brake lines.
5. Always make sure trailer is loaded slightly tongue heavy. Do not pull a trailer that is lighter on the tongue end.
6. The ball is properly latched when the flat surface of the ball stud is level with the cylinder. When the ball is in the latched position it will not rotate or move up and down.
7. Retorque the bolts after the first 500 miles of trailer towing; thereafter check during normal service.
8. The installer must instruct the operator on proper ball installation and locking procedures.



PARTS LIST



- A: Ball Stud: Twin Lock or Inventa (1x)
- B: Safety Chain Loop (U-Bolt) (2x) left+right
- C: Rectangular Tube (2"x6") and Receiver Cylinder
- D: Z Assembly (Gator Tube) (2x) left+right
- E: Fulton Clamp (2x) left+right
- F: L Bracket (2x) left+right



Inverta Ball Installation and Removal

To Install the Inverta Ball

1. Align pin (A) with slot (B) in hitch, drop into receiver cylinder, depress locking tab if required.
2. Twist the ball 30° clockwise while lifting slightly until ball drops into position and locking tab snaps in the slot.

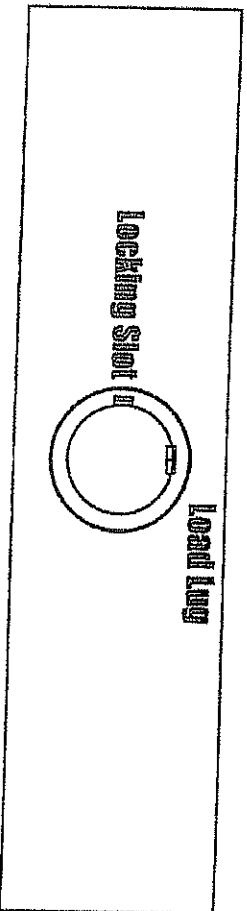
To Remove Inverta Ball

1. Push in the locking tab and then lift and rotate the ball assembly counterclockwise. Continue rotating and lifting until the ball stud clears the receiver cylinder.

To Store Inverta Ball

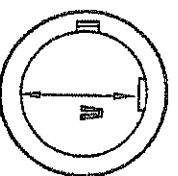
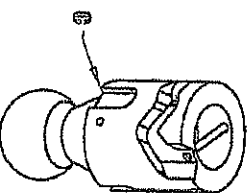
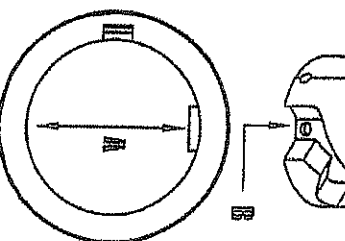
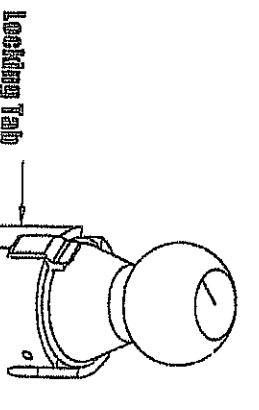
1. Align pin (A) with slot (B) in hitch.
2. Push in the locking tab and and let the ball assembly to drop into the receiver cylinder.
3. Pull the ball straight up to remove it.

Front of Vehicle

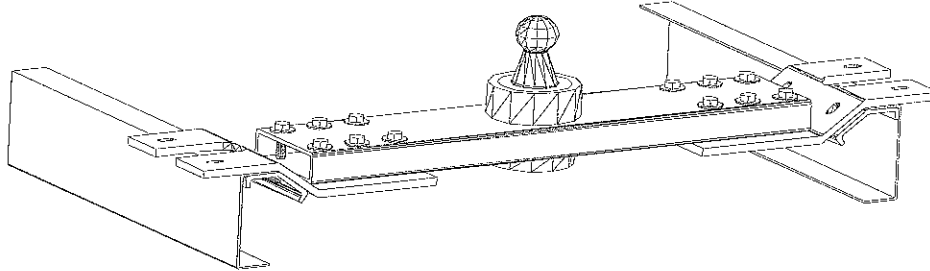


Install the cross member with the locking slot toward the driver's side.

The load lug in the cylinder should be toward the cab or front of the vehicle.



DIAMOND HITCH INSTALLATION INSTRUCTIONS
GM -303
88-98 GM LONGBED and SHORTBED MODELS
1999-2000 One Ton Dually
Updated (10-01-04)



1. Remove spare tire.
2. Remove heat shield from underneath bed if applicable..
3. Release the rear tailpipe hanger, lower rubber portion.
4. Measure from the rear of the bed along the center valley as follows:
 - Short Bed : **40 inches (Removal of bed brace required)**
 - Long Bed Dually: **46 inches**
5. Center 4 inch diameter hole, cutout using a quality hole saw.
6. Insert 4- ½" x 3 ¼" bolts with washers on the head into the 2" x 6" rectangular tube assembly on one side.
7. Attach one ½"x 6" Z- assembly to one side with a lock washer and nut. Torque bolts to 75 ft/lbs.
Note: The plate has 6 holes, only four bolts are required.
8. Pre Load 4 - ½" x 3 ¼" bolts with flat washers on the head into the opposite end of the 2"x 6" rectangular tube.
9. Insert the rectangular tube from the bottom, with the attached Z-assembly toward the passenger side. It may be helpful to support the tube assembly from the top using a 2x4 between the wheel wells and a rope through the cylinder.
10. Attach the second ½" x 6" Z-assembly to the rectangular tube using the bolts inserted in step #8, with a lockwasher and ½"nut. Torque bolts to 75 ft/lbs.
11. Install the Fulton Internal Frame compression clamp utilizing ½" x 2" bolts with flat washers, both ends and lock nuts. Leave the bolts loose.
12. Install the outer L-Brackets (Slots on the 3" leg toward the front, 4" leg against frame) utilizing the ½"x 2" bolts and ¼" square washer on the inside of the frame.
 - **Fastener Sequence on the L-Bracket (4" leg) from the inside of the frame outward.**
 - Front Hole:** ½" x 2" bolt, flat washer, ¼" square, frame, L-bracket, flat washer, lock nut.
 - Back Hole:** ½" x 2" bolt, flat washer, ¼" square, frame, L-bracket, flat washer, lock nut.
13. Install 1 ½" x 2" bolts with washers and lock nuts into the outside slots on the Z assembly through the outer L bracket slots with nuts down.
14. Release rectangular tube from the upper support, center 4" cylinder in hole.
15. Tighten Bolts to **75 ft-lbs of torque** as follows:
 - 8 - 1/2" x 3 1/4" bolts through the rectangular tube to the Z assembly.
 - 4 - 1/2" x 2" bolts through the Z assembly to the Fulton Clamp, adjust as needed for frame taper, slide up as far as possible inside the frame.
 - 4 - 1/2" x 1 1/2" bolts attaching the Z assembly to outside L- Bracket.
 - 4 - 1/2" x 2 " bolts attaching the outside L- bracket to the truck frame, elevation of the L- Bracket, flush with the top of the frame.
16. Drill 4 - 1/2" holes upward through the rectangular tube and truck bed.
17. Install U-Bolts with one spring and nut per lug, lift above the bed ~ 1 1/2".