



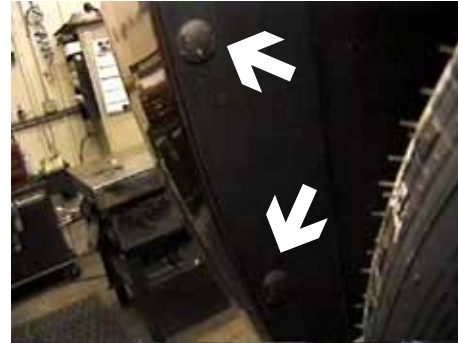
**BX3319 Installation Instructions**  
**2003-04 Saturn Ion (4 Cylinder Manual Only)**

Serial No.

**Strong As An Ox™** The front fascia and metal bumper are removed for baseplate installation. Minor trimming of fascia is required. Drilling is required. The BX8869 is available for the vehicle. Attachment Tabs are 24 inches center to center and a height of 13 1/2 inches.



1. Remove the four metric bolts from the top side of fascia using the 7MM socket. **Quad coupe model will not have black cover.**



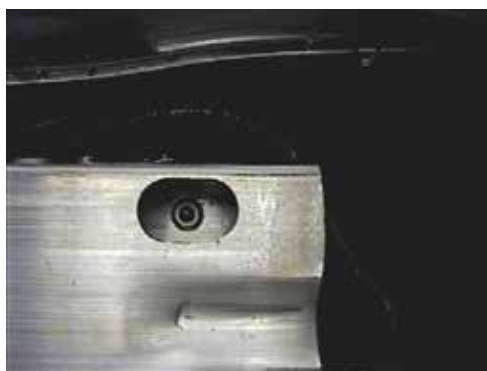
2. Just forward of front tire, inside wheel well, are two push pins to remove and one metric bolt to remove with the 7MM socket, both sides.



3. Just forward of front tire, on the bottom side of fascia, are four push pins to remove, both sides. Pull fascia ends to the side and forward, set aside.



4. Using the bottom edge of the metal bumper as a guide, mark the front of the bumper bracket with a scribe toward the inside of frame end, both sides.



5. Remove six metric bolts from metal bumper using the 13MM socket, set metal bumper aside.



6. Make horizontal cut to frame on bumper bracket's scribe mark and make a vertical cut on frame edge to open area for baseplate, both sides.



Strong As An Ox™



7. Slide baseplate ends to the inside of frame rails. Slide up and forward as far as possible, clamp to frame. Using item 1 as a template, drill the three top holes with the 13/32" drill bit, both sides.
8. Insert item 2 into opening on bottom of frame to align with drilled holes and tighten items 3 and 4 according to drawing on last page. **Be sure and use loctite on all bolts before tightening. Torque all bolts according to Torque Chart in General Instructions sheet.**
9. Trim upper rib of fascia opening as needed. Reinstall metal bumper and fascia.
10. The dimensional variations between otherwise identical cars can be considerable. While the location and size of the holes in the baseplate were designed to allow for easy installation, it may be necessary to file a hole slightly to allow a bolt to clear.
11. Install the tow bar and safety cables according to the instructions included in their packages.
12. Do **not** substitute other devices if the tow bar pin and clip are lost.
13. **DEALER OR INSTALLER: BE CERTAIN THE USER RECEIVES THE INSTRUCTION SHEET.**



Location of BX8869 bulb and socket installation on driver's side (right photo).





Strong As An Ox™

## Tools Required

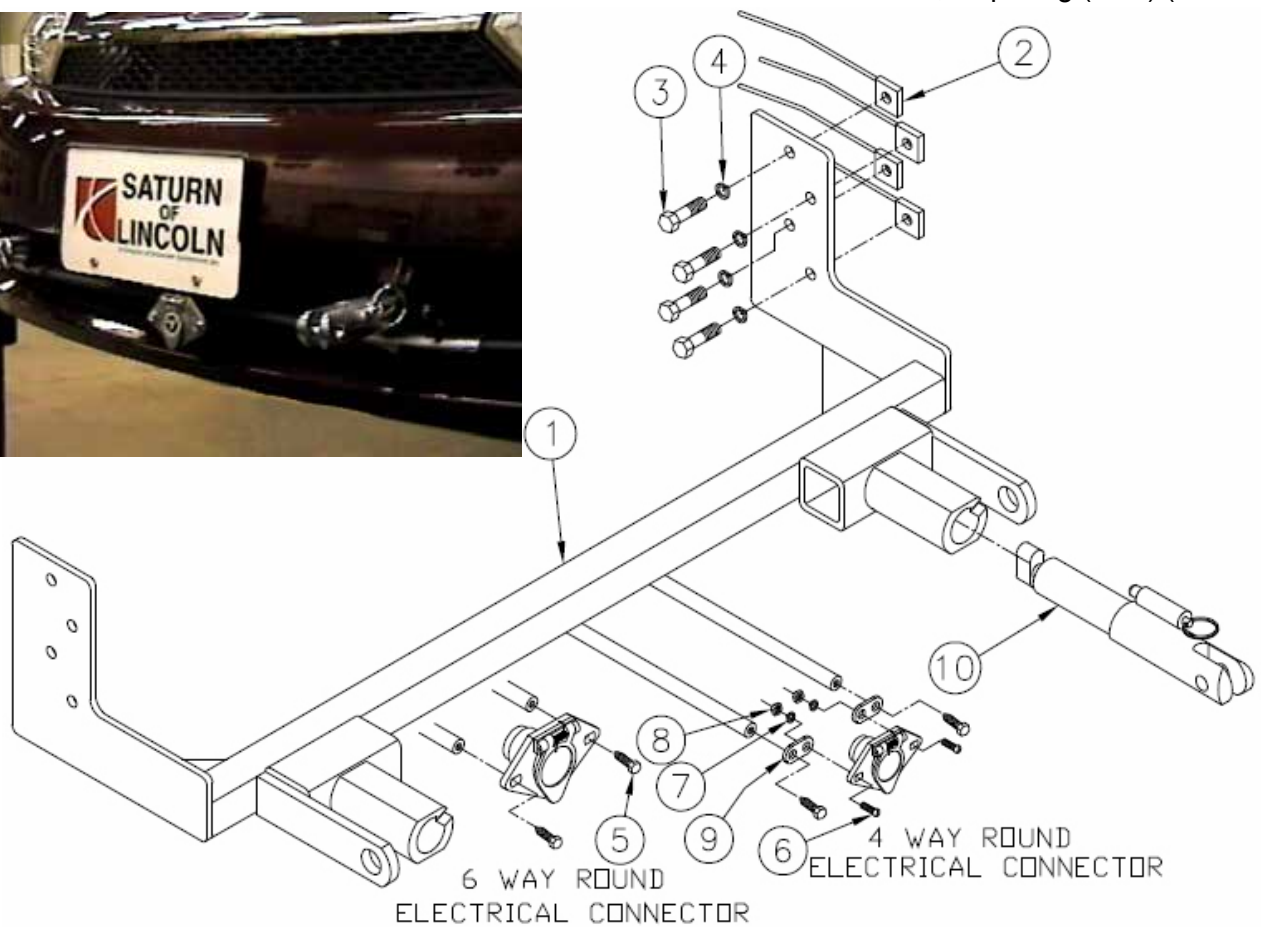
9/16" Socket  
13/32" Drill Bit  
Scribe

Loctite  
10MM Socket  
Hack Saw

7MM Socket  
13MM Socket  
Vise Grip

## Parts List

Ref. No.	Qty.	Part No.	Description
1	1	61-5873	Weldment, Base Plate, BX3319
2	8	61-5208	3/8-16 Nut Plate
3	8	201-0440	3/8-16 x 1 1/2 Bolt, Grd. 5, ZP
4	8	203-0010	3/8 Lock Washer, ZP
5	2	201-0979	#12-14 x 1" Self Drilling Screw, ZP
6	2	201-0192	#10-32 x 1/2 Slot, Rd. Hd. Screw
7	2	203-0054	#10 Lock Washer
8	2	202-0047	#10-32 Hex Nut
9	2	101-5822	Adapter, 4 Way Connector
10	2	62-3469	Attachment, Assembly, SF/LB (R)
	2	201-0654	#10-16 X 1 Self Drilling Screw (Not Shown)
	2	226-0046	Baseplate Safety Cable, 36" CL III (Not Shown)
	2	229-0359	Quicklink, 3/8, ZP (Not Shown)
	2	290-0437	Receiver, Cap Plug (BLK) (Not Shown)



**IMPORTANT:** Use only genuine factory replacement parts on your Base Plate. Do not substitute homemade or nontypical parts. If a bolt is lost or in need of replacement, for your safety and the preservation of your Base Plate, be sure to use a replacement bolt of the same grade (Usually Grade 5, refer to parts list). Repair parts may be ordered through your nearest **Blue Ox** dealer or distributor.

© 2004 Blue Ox Division, Automatic Equipment Mfg. Co. • One Mill Road, Industrial Pender, Nebraska 68047 • Phone 402-385-3051 • Fax 402-385-3360 • [www.blueox.us](http://www.blueox.us)

Go RVing  
LIFE & TRIP

# General Information

1. Ensure that your product(s) are registered online at [www.blueox.com](http://www.blueox.com). It is crucial to register your product(s) so that you may be alerted of product offerings, updates, upgrades, maintenance and safety bulletins, and/or recalls.
2. **It is the owner's responsibility to inspect all towing equipment for cracked welds, missing or worn parts and loose bolts before each towing trip.** Be sure to use Loctite® Red on all bolts and tighten to the recommended specifications.
3. **It is the owner's responsibility to hook up all towing equipment per manufacturer's instructions/recommendations.**
4. Remove the attachment tabs when not in use (if applicable).

## Notice To Baseplate Installer

### 1. It is YOUR responsibility to watch for:

- Oil cooler and air conditioner lines
- Electrical wires and hoses
- Missing parts or attaching points on the frame

\*\* If the baseplate is improperly installed and is against a wire or hose, it could cause fluid leaks or electrical shorts some time after the actual baseplate installation.

## Permanent Baseplate Safety Cable Installation

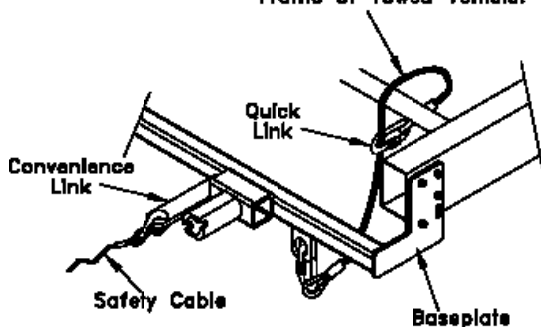
Permanent baseplate safety cables are strongly recommended when towing a vehicle with a tow bar. The principle function of the permanent baseplate safety cables is to prevent the towed vehicle from breaking loose in the event the connection between the frame of the towed vehicle and the baseplate fails or becomes disconnected. The cables must be connected from the baseplate to the frame rail or cross member of the vehicle's frame. The illustrations below show the possible arrangements recommended by Blue Ox®. Each permanent baseplate safety cable must have an adequate weight rating for the towing system. The weight rating of the two (2) cables together will not qualify.

***Do not mount the permanent baseplate safety cables against wires, hoses or brake lines.***

These permanent baseplate safety cables should remain installed as long as the baseplate is installed on the vehicle. Permanent baseplate safety cables are to be used in conjunction with, and NOT a replacement for legally required safety cables attaching the towed vehicle to the towing vehicle.

### OPTION #1

Permanent Baseplate Safety Cables to Cross Member or Frame of Towed Vehicle.



### OPTION #2

Permanent Baseplate Safety Cables to Cross Member or Frame of Towed Vehicle.

