



BX1919 Installation Instructions
1991-94 Dodge Dakota 2WD & 4WD (Not Sport)
1995-96 Dodge Dakota (Including Sport)

Utilization of Blue Ox baseplates with any tow bar not approved by Automatic Equipment Mfg. Company invalidates the limited warranty.

Installation of this baseplate requires drilling all mount holes into the frame of the vehicle.

1. Read the General Instruction Sheet included with this baseplate.
2. The baseplate mounts to the front underside of the pickup using six bolts (4WD) or eight bolts (2WD). All the mount holes must be drilled for both the 2WD and 4WD installation.
3. Select the proper set of mounts for your pickup. The taller mounts with six holes are for 2WD pickups. The shorter mounts with five holes are for 4WD pickups.
4. The mounts will bolt to the underside of the frame rail and along the outside of the bumper mounts. The trimmed corner of the mount faces outside and to the front of the pickup. See Figure on Page 2.
5. To get an idea of the final configuration, loosely bolt the mounts to the base tube and hold it up under the bumper. The mounts should slide up along the outside of the bumper mount and the top of the mount should push up against the bottom of the frame.

NOTE: 4WD pickups will have a sheet metal shield which has a mount bolt in the area where the top of the mount sits against the bottom of the frame. Remove this bolt and set it aside. When you bolt the mount to the bottom of the frame, "sandwich" the shield between the frame and the mount. This will provide satisfactory mounting for the shield.

6. Unbolt the mounts from the base tube. Hold one of the mounts up in and clamp in the proper position. Measure from the end of the frame rail to the front of the mount. Position the mount on the opposite side of the pickup using this measurement.
7. With both mounts positioned, use a 17/32" transfer punch to locate the hole to be drilled in the frame on both sides. Remove the mounts and drill the holes.
8. Reposition the mounts and bolt them in place using a 1/2 x 1 1/4 bolt, nut, and flat washer. With the mounts in place, either use the mount as a template to drill the rest of the holes, or mark them, remove the mounts, and drill them.
9. With the holes drilled, position the base tube between the mounts and start the 1/2 x 1 1/4 bolts and nuts through the base tube and mounts. Two spacers are provided if needed.
10. The dimensional variations between otherwise identical cars can be considerable. While the location and size of the holes in the baseplate were designed to allow for easy installation, it may be necessary to file a hole slightly to allow a bolt to clear.
11. When all bolts align, apply Loctite and tighten securely.
12. Install the tow bar and safety cables according to the instructions included in their packages.
13. Do not substitute other devices if the tow bar pin and clip are lost.
14. DEALER OR INSTALLER: BE CERTAIN THE USER RECEIVES THE INSTRUCTION SHEET.

Automatic

Tools Required

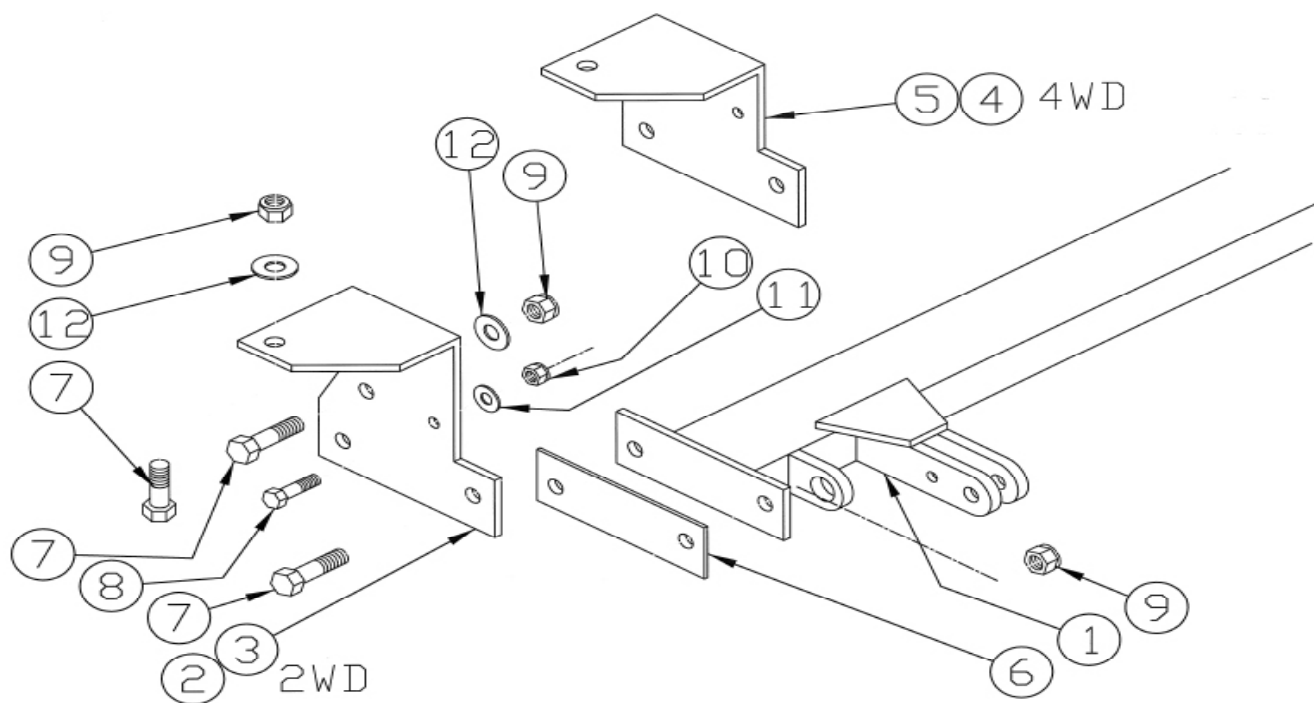
9/16" Wrenches
13mm Wrench
C-Clamps
Locktite Blue

3/4" Wrenches
Drill
17/32" Drill Bit

17/32" Transfer Punch
13/32" Transfer Punch
13/32" Drill Bit

Parts List

Ref. No.	Qty.	Part No.	Description
1	1	61-3843	Weldment, Base Tube
2	1	101-4913	End Mount, 2WD D-Side
3	1	101-4914	End Mount, 2WD P-Side
4	1	101-4915	End Mount, 4WD D-Side
5	1	101-4916	End Mount, 4WD P-Side
6	2	102-3366	Flat, Spacer
7	8	201-0011	1/2-13 X 1 1/4 Hex Bolt, Grd. 5
8	4	201-0368	3/8-16 X 1 1/4 Hex Bolt, Grd. 5
9	8	202-0094	1/2-13 Lock Nut w/ Nylon Insert
10	4	202-0090	3/8-16 Hex Nut w/ Nylon Insert
11	4	203-0003	3/8 Flat Washer
12	4	203-0005	1/2 Flat Washer
	2	226-0049	Baseplate Safety Cable, Class IV (Not Shown)
	4	229-0512	Quicklink, 1/2, ZP (Not Shown)



General Information

1. Ensure that your product(s) are registered online at www.blueox.com. It is crucial to register your product(s) so that you may be alerted of product offerings, updates, upgrades, maintenance and safety bulletins, and/or recalls.
2. **It is the owner's responsibility to inspect all towing equipment for cracked welds, missing or worn parts and loose bolts before each towing trip.** Be sure to use Loctite® Red on all bolts and tighten to the recommended specifications.
3. **It is the owner's responsibility to hook up all towing equipment per manufacturer's instructions/recommendations.**
4. Remove the attachment tabs when not in use (if applicable).

Notice To Baseplate Installer

1. It is YOUR responsibility to watch for:

- Oil cooler and air conditioner lines
- Electrical wires and hoses
- Missing parts or attaching points on the frame

** If the baseplate is improperly installed and is against a wire or hose, it could cause fluid leaks or electrical shorts some time after the actual baseplate installation.

Permanent Baseplate Safety Cable Installation

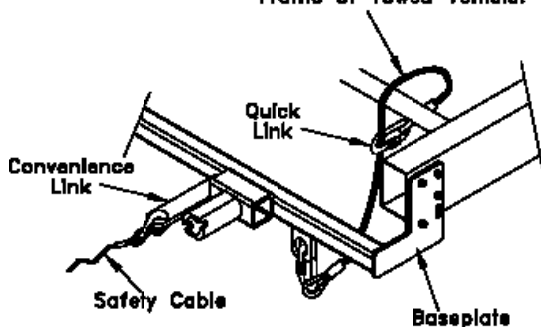
Permanent baseplate safety cables are strongly recommended when towing a vehicle with a tow bar. The principle function of the permanent baseplate safety cables is to prevent the towed vehicle from breaking loose in the event the connection between the frame of the towed vehicle and the baseplate fails or becomes disconnected. The cables must be connected from the baseplate to the frame rail or cross member of the vehicle's frame. The illustrations below show the possible arrangements recommended by Blue Ox®. Each permanent baseplate safety cable must have an adequate weight rating for the towing system. The weight rating of the two (2) cables together will not qualify.

Do not mount the permanent baseplate safety cables against wires, hoses or brake lines.

These permanent baseplate safety cables should remain installed as long as the baseplate is installed on the vehicle. Permanent baseplate safety cables are to be used in conjunction with, and NOT a replacement for legally required safety cables attaching the towed vehicle to the towing vehicle.

OPTION #1

Permanent Baseplate Safety Cables to Cross Member or Frame of Towed Vehicle.



OPTION #2

Permanent Baseplate Safety Cables to Cross Member or Frame of Towed Vehicle.

