



**Installation Instructions BX1828
Nissan Sentra 2000-01**

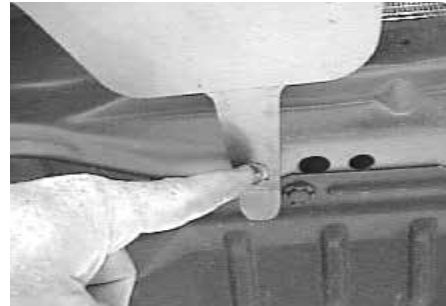
Serial No.

The front bumper fascia and metal bumper are removed for baseplate installation. Holes need to be drilled and the bumper fascia needs to be trimmed



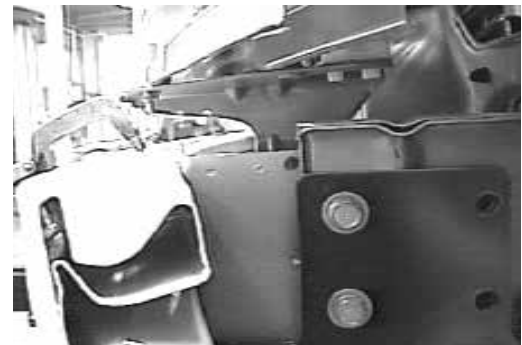
1. Open hood and remove screws from top of grill. Carefully pull grill up and out to remove.

4. Pull molding back and remove the two nuts connecting fascia to fenders.



2. Remove the screws from the top of the bumper fascia.

5. Remove screws from bottom of bumper fascia. Remove fascia from vehicle and disconnect wiring.



3. Remove the screws from wheel well molding forward of the front tires.

6. Hold baseplate up to frame and bolt to existing holes. Relocate the plastic molded end pieces on each side of the frame to the holes below the side plates. The fluid reservoir plastic needs to be trimmed also.

Automatic



7. Insert the wire nut plates into frame just behind the metal bumper. Do not tighten.



8. Clamp the baseplate to the front of the metal bumper.



9. Drill holes for bottom of metal bumper, use baseplate as a template.



10. Insert 1/2" nut plate through slots in the front of metal bumper. Loctite bolts and tighten according to the chart in the General Instruction Sheet.



11. Center punch and drill 3/8" holes for remaining two holes. Use 3/8" hardware and tighten. Use loctite.

13. Replace facia and electrical connections.

Tools Required

12MM Wrench
Loctite Blue

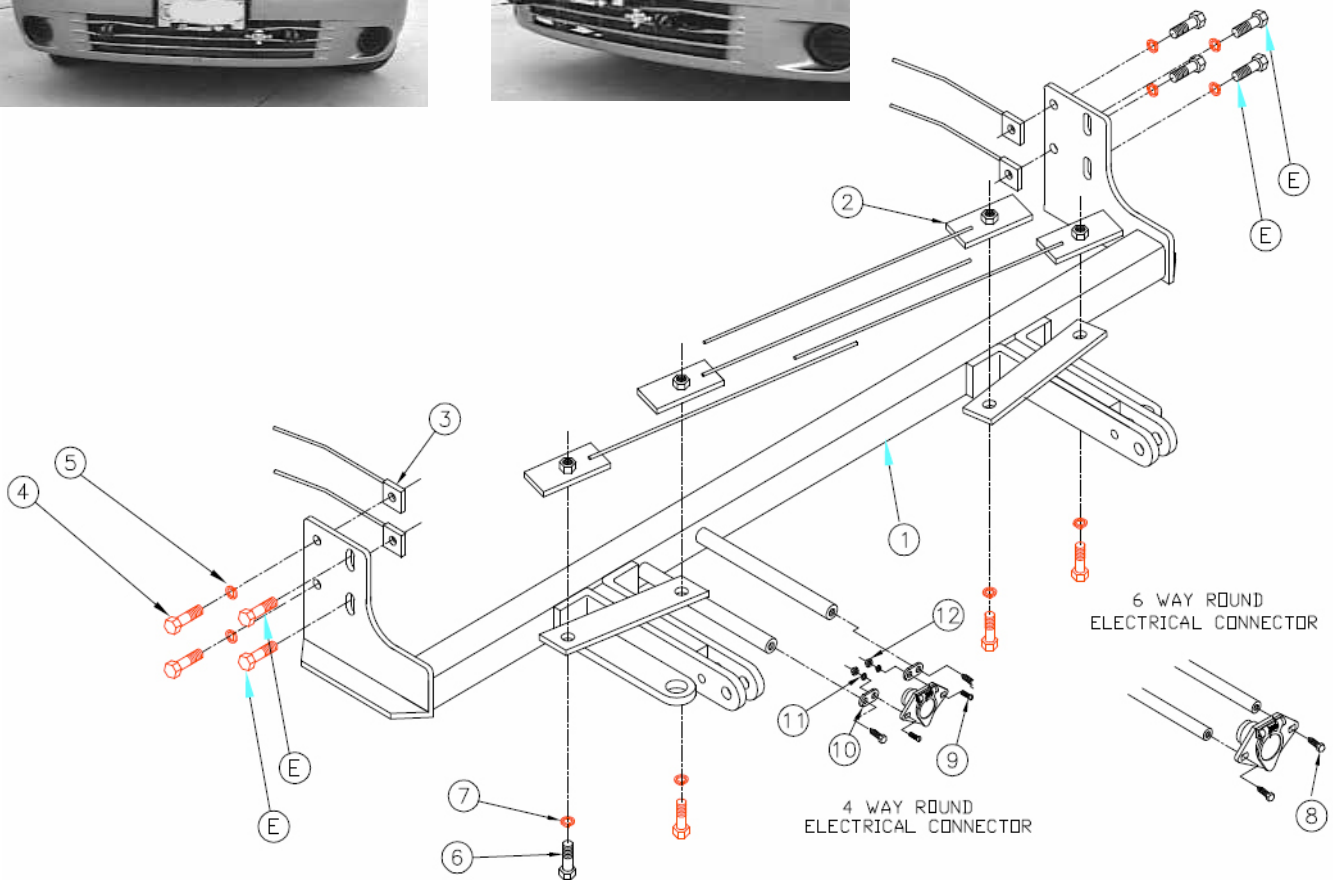
9/16" Wrench
C Clamp

14MM Wrench
Screwdriver

3/4" Wrench
Utility Knife

Parts List

Ref. No.	Qty.	Part No.	Description
1	1	61-5515	Weldment, Base Plate, BX1828
2	4	61-5237	1/2-13 Nut Plate, With 14 Inch Wire
3	4	61-5208	3/8-16 Nut Plate, With 14 Inch Wire
4	4	201-0440	3/8-16 x 1 1/2 Hex Bolt Grd. 5 ZP
5	4	203-0010	3/8 Lock Washer, ZP
6	4	201-0051	1/2-13, Bolt, Hex Grd 5, ZP
7	4	203-0012	1/2 Lock Washer, ZP
8	2	201-0979	#12-14 X 1" Self Drilling Screw, ZP
9	2	202-0047	#10-32 Hex Nut
10	2	203-0054	#10 Lock Washer
11	2	201-0192	#10-32 x 1/2 Solt, RD. Screw
12	2	101-5822	Adapter, 4 Way Connector
E	4	Existing	14MM
	2	226-0046	Baseplate Safety Cable, 36" CL III (Not Shown)
	4	229-0359	Quicklink, 3/8, ZP (Not Shown)



General Information

1. Ensure that your product(s) are registered online at www.blueox.com. It is crucial to register your product(s) so that you may be alerted of product offerings, updates, upgrades, maintenance and safety bulletins, and/or recalls.
2. **It is the owner's responsibility to inspect all towing equipment for cracked welds, missing or worn parts and loose bolts before each towing trip.** Be sure to use Loctite® Red on all bolts and tighten to the recommended specifications.
3. **It is the owner's responsibility to hook up all towing equipment per manufacturer's instructions/recommendations.**
4. Remove the attachment tabs when not in use (if applicable).

Notice To Baseplate Installer

1. It is YOUR responsibility to watch for:

- Oil cooler and air conditioner lines
- Electrical wires and hoses
- Missing parts or attaching points on the frame

** If the baseplate is improperly installed and is against a wire or hose, it could cause fluid leaks or electrical shorts some time after the actual baseplate installation.

Permanent Baseplate Safety Cable Installation

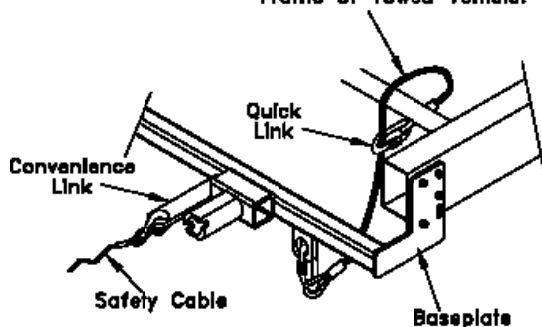
Permanent baseplate safety cables are strongly recommended when towing a vehicle with a tow bar. The principle function of the permanent baseplate safety cables is to prevent the towed vehicle from breaking loose in the event the connection between the frame of the towed vehicle and the baseplate fails or becomes disconnected. The cables must be connected from the baseplate to the frame rail or cross member of the vehicle's frame. The illustrations below show the possible arrangements recommended by Blue Ox®. Each permanent baseplate safety cable must have an adequate weight rating for the towing system. The weight rating of the two (2) cables together will not qualify.

Do not mount the permanent baseplate safety cables against wires, hoses or brake lines.

These permanent baseplate safety cables should remain installed as long as the baseplate is installed on the vehicle. Permanent baseplate safety cables are to be used in conjunction with, and NOT a replacement for legally required safety cables attaching the towed vehicle to the towing vehicle.

OPTION #1

Permanent Baseplate Safety Cables to Cross Member or Frame of Towed Vehicle.



OPTION #2

Permanent Baseplate Safety Cables to Cross Member or Frame of Towed Vehicle.

